

# WALKING WHERE JESUS WALKED



## WAILING WALL, JERUSALEM

*Experience the rich history and cultural significance of Israel, where the Cornerstone of our Faith taught the way to salvation and made it possible through His loving sacrifice. Embark upon a journey exploring the breathtaking sites integral to the life and death of Jesus of Nazareth, and discover the meaning behind these historical landmarks as you walk in the footsteps of the most influential man in history! Explore the wonders of the Holy Land with its natural beauty and unique architecture, while enjoying inspirational teaching, Christian fellowship, luxury accommodations and splendid cuisine! A lifetime of memories await you!*



**DR. KEVIN & PATRICE WILLIAMS**

**FEBRUARY 9 - 18, 2026**

# 10-DAY ITINERARY

Monday, February 9, 2026

DEPARTING

**ATLANTA, GEORGIA**

Depart: TBD  
Hartsfield-Jackson Atlanta International  
Airport

\* check in is three (3) hours before flight departs

## DAY 1

**MONDAY: DEPARTURE**

We depart the U.S. for our flight to Tel Aviv.

## DAY 2

**TUESDAY: FLIGHT INTO TEL AVIV**

Shalom! We arrive in HIS LAND. Upon arrival at Ben Gurion Airport, we will be met and assisted to our motor coach. We proceed to our hotel on the shores of the Mediterranean. You will enjoy your first dinner as a group. Overnight Netanya. (D)

## DAY 3

**WEDNESDAY: CAESAREA - MEGIDDO - TIBERIAS**

Today's sites include the ancient seaport and Roman theater at Caesarea, Mount Carmel, Megiddo and the Valley of Armageddon. We arrive in Tiberias at our hotel overlooking the Sea of Galilee. (B, L, D)

## DAY 4

**THURSDAY: SEA OF GALILEE - CAPERNAUM - CAESAREA PHILIPPI**

Today we cross the Sea of Galilee by boat landing at Kibbutz Nof Ginosar where we view the ancient Jesus Boat. We continue to the site of Peter's restoration and the Mt. of the Beatitudes before arriving at Kibbutz En Gev for a lunch of St. Peter's fish. Later we visit Capernaum, Jesus' ministry base with its ancient synagogue. Time permitting, we will travel north to Caesarea Philippi and the mouth of the Jordan River. We end our day at the baptismal site on the Jordan River. If you desire to be baptized, please bring a swimsuit. (B, L, D)

## DAY 5

**FRIDAY: GIDEON'S SPRING / JERUSALEM**

This morning we travel south to Gideon's Spring at En Harod. We then go up to the Holy City of Jerusalem! Enter HIS gates with gladness! We will overview Jerusalem from the Mt. of Olives, Palm Sunday Road to Garden of Gethsemane before arriving at our hotel. (B, L, D)

## DAY 6

**SATURDAY: JERUSALEM - MOUNT OF OLIVES / GETHSEMANE / OLD CITY**

We begin our day on the top of the Mt. of Olives before taking the Palm Sunday path to the Garden of Gethsemane. We have a very special prayer service in a private garden next to Gethsemane. Later we enter the Old City through the Lion's Gate and visit the famous Church of St. Anne with its rich, deep acoustics and the Pool of Bethesda. We continue to the Sisters of Zion Convent to visit the site of Pilate's Judgment Hall/Antonio Fortress. We continue to the house of Caiaphas. (B, L, D)

## DAY 7

**SUNDAY: JERUSALEM - OLD CITY / SOUTHERN WALL EXCAVATIONS**

Today we visit the Jewish Quarter, Wailing (Western) Wall and Temple Mount where we view the Dome of the Rock, the Al Aksa Mosque and the site where The Temple once stood. We also visit The City of David and view a special movie before ending our day at the Western Wall Tunnel. (B, L, D)

## DAY 8

**MONDAY: MASADA / QUMRAN / DEAD SEA**

We depart Jerusalem and proceed through the Judean Wilderness to Qumran, the site where a Bedouin shepherd found the Dead Sea Scrolls in 1947. We travel south along the shore of the Dead Sea on the lowest road in the world to Masada, truly a remarkable piece of history. En Gedi, a beautiful oasis on the shores of the Dead Sea is our last stop before returning to Jerusalem. (B, L, D)

## DAY 9

**TUESDAY: GARDEN TOMB**

Today we visit the Garden Tomb for an exciting time of praise and worship. We will view Golgotha and then tour the Garden itself with a visit to the empty tomb. Time permitting, we may visit additional sites before returning to our hotel to freshen up and have dinner. (B, L, D)

## DAY 10

**WEDNESDAY: FLIGHT INTO TO THE U.S.A**

We depart our hotel very early this morning for our flight. After a plane change, we continue to Atlanta. We will return with memories and new friends to last a lifetime and beyond!

ARRIVING

Wednesday, February 18, 2026

**ATLANTA, GEORGIA**

Arrives: TBD

Hartsfield-Jackson Atlanta International  
Airport



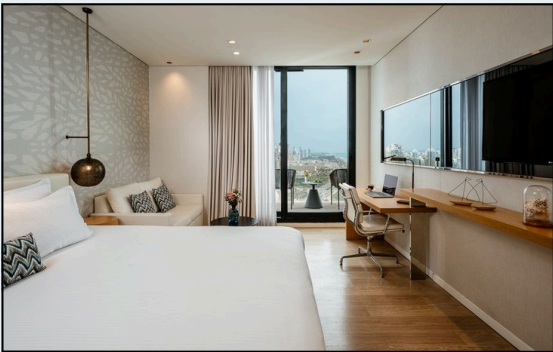
# ACCOMMODATIONS & UPGRADES



*All rooms for this tour are standard base deluxe rooms.*

*Upgraded accommodations are optional, and are subject to availability upon request.*

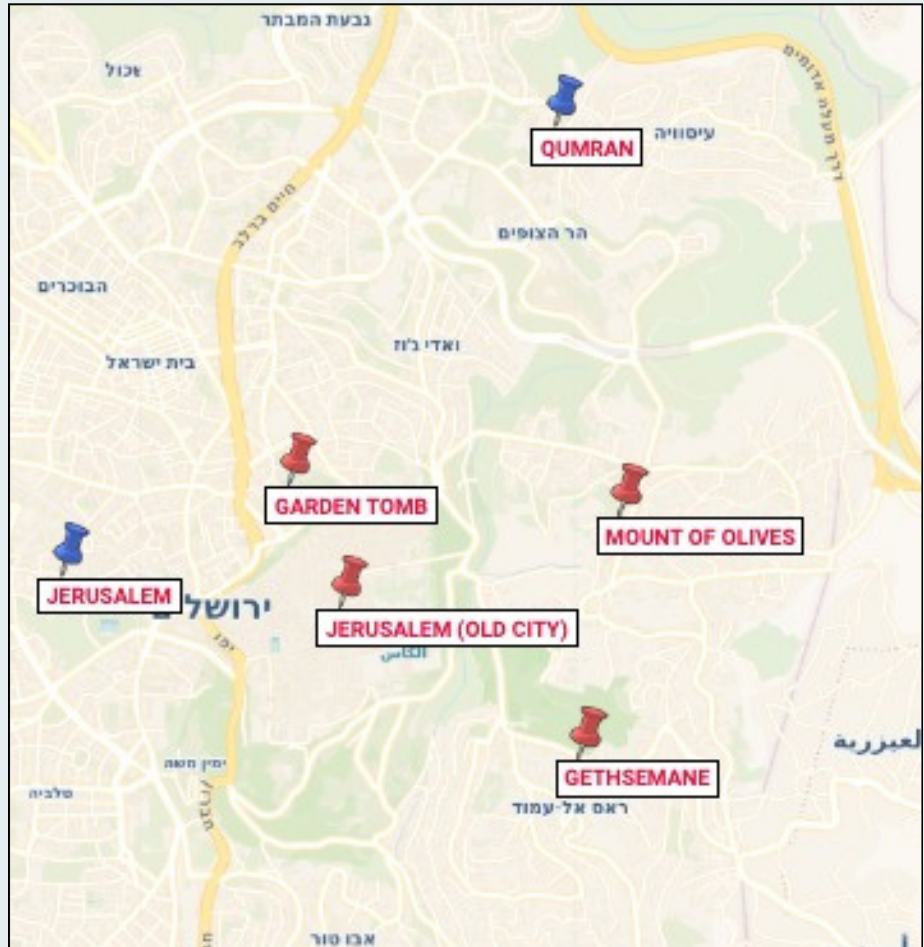
## VERT LAGOON - NETANYA



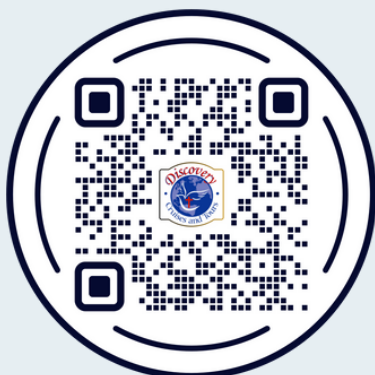
## DAVID'S HARP - GALILEE



## DAN PANORAMA - JERUSALEM



*Come see where the price of our salvation was paid in full.*



**Room prices are based on dual occupancy rates. Single occupancy is optional for an added cost.  
All room photos are representative, and actual rooms may vary slightly.**

# TERMS & CONDITIONS

**PRICING:** Our pricing is in U.S. dollars, and is based upon the current rate of international exchange between the U.S. dollar and foreign currencies at the time prices are posted. Whenever possible, **Discovery** obtains price guarantees from its suppliers, but in rare circumstances, a price increase may be unavoidable due to an increase in fees, including fuel surcharges, carrier surcharges, taxes, fluctuations in foreign exchange markets or any combination thereof. In that instance, the increase will be charged to the traveler up to the time of departure. Up-to-date pricing can be found at [dcttravel.com](http://dcttravel.com).

**NOT INCLUDED IN PRICING:** Passport costs, optional pre/post hotel nights due to traveler's arrival and departure preferences, hotel or other costs incurred to accommodate travel connections, items of a personal nature, including, but not limited to, laundry, non-included meals, room service at hotel(s), phone calls, Internet, etc.

**TRAVEL PROTECTION INSURANCE:** **Discovery** recommends purchasing a travel protection plan that helps offset costs and expenses should something unexpected occur. There are various plans available which cover Trip Cancellation, Trip Interruption, Emergency Medical and Emergency Evacuation, Emergency Repatriation, Trip Delay, Baggage Delay, and more. **Discovery** does not offer travel insurance, but many plans are available for purchase elsewhere, for example, at [MissionSafe.com](http://MissionSafe.com).

**PASSPORT REQUIREMENTS:** Passports are required for all travelers, including children. **Passports must remain valid for 6 months beyond the completion of your travel dates; and are required for air travel outside the U.S.** For U.S. citizens and residents, more information is available online at [www.travel.state.gov/passport](http://www.travel.state.gov/passport), or by calling the National Passport Information Center at 877-487-2778. When necessary, a group visa for U.S. citizens will be obtained by **Discovery** for those confirmed by the final payment date. Non-U.S. citizens and U.S. citizens originating from outside the U.S. should consult their country's embassy regarding specific requirements for entry into each and every country of destination. **Your passport name must match the name on your registration, cruise boarding pass, and airline ticket, or you may be denied travel.** It is the personal responsibility of each passenger to fully comply with all immigration and documentation requirements.

**PHYSICAL REQUIREMENTS:** Travel suppliers (cruise line, air carrier, shore excursion agents, etc.) may have restrictions regarding certain physical requirement accommodations. If you have a medical condition (mobility limitations, pregnancy, etc.), or use medical equipment which could affect your travel, consult your physician and notify **Discovery**, so we can provide you with information regarding possible restrictions. If you are unable to get on and off the bus and walk without the assistance of another individual, you must bring someone with you to provide assistance, or you may stay on the bus as needed.

**PAYMENT INFORMATION:** Final payments **MUST** be received ninety (90) days prior to departure. Payments received inside ninety (90) days will be assessed an \$80 late payment fee. **NOTE: All reservations not fully paid by the ninety-day deadline are subject to cancellation, and Discovery will not be held responsible.** Cancellation of airline seats or changes to passport registrations within one hundred (100) days of departure each carry a penalty of \$100 per person. Registration deposits must be made online by credit card, and subsequent payments may be made online by credit card or by mailed payment methods, including personal checks, cashier's checks, money orders, and credit card checks drawn against your card. Subsequent payments made online by credit card incur a 2.25% processing fee, but NO processing fee is charged for the deposit at time of registration.

**REGISTRATION & DEPOSIT:** **A deposit of \$500 per person is required at the time of registration.** The deposit may be charged to your **Visa, Mastercard, American Express,** or **Discover** card. Registrations received within ninety (90) days of departure must be paid in full. A late registration may result in an additional fee for airfare, depending on the airline and seating availability.

**FOR ADDITIONAL DETAILS ON TOURS AND RELEVANT POLICIES, PLEASE VISIT [OUR WEBSITE](#), AND CLICK ON THE "IMPORTANT INFORMATION" TAB OF THE TOUR SELECTED. BE SURE TO SCROLL DOWN TO THE SUBSECTION "TOUR OPERATOR RESPONSIBILITY".**

**FOR MORE GENERAL INFORMATION ABOUT TOURS, INCLUDING TRAVEL TIPS AND MANDATES, VISIT OUR [FREQUENTLY ASKED QUESTIONS PAGE](#).**

## PAYMENTS (Must be made in U.S. funds and are per person)

Registration Amount \$500

November 11, 2025 Final payment due

Registration after final due date Full payment due

## RESERVATION CHANGE FEES (per person)

Day of Registration – November 10, 2025 \$100

On or after November 11, 2025 No changes allowed

*Additional fees may be assessed, such as single occupancy rates due to roommate cancellation, and will be paid by the traveler. Additionally, any deviation from group accommodations which incur additional costs will be paid by the traveler. Change fees will NOT be assessed for upgrades or for the addition of services, unless air reservations are altered and/or travel documents must be reissued.*

## CANCELLATION FEES (per person)

Day of Registration - November 10, 2025 \$200

November 11 - November 26, 2025 \$500

November 27 - December 12, 2025 25% of tour cost

December 13, 2025 - January 10, 2026 50% of tour cost

On or after January 11, 2026 NO REFUND

*Cancellation fees apply for any reason, including medical and family emergencies. Cancellations must be submitted to **Discovery** in writing at [contact@dcttravel.com](mailto:contact@dcttravel.com), and confirmed by reply from **Discovery**.*



**[DCTTRAVEL.COM](http://DCTTRAVEL.COM)**

**235 NE Loop 820, Suite 101**

**Hurst, TX 76053**

**817-595-2700**

**[contact@dcttravel.com](mailto:contact@dcttravel.com)**