

WALKING WHERE JESUS WALKED



WAILING WALL, JERUSALEM

Experience the rich history and cultural significance of Israel, where the Cornerstone of our Faith taught the way to salvation and made it possible through His loving sacrifice. Embark upon a journey exploring the breathtaking sites integral to the life and death of Jesus of Nazareth, and discover the meaning behind these historical landmarks as you walk in the footsteps of the most influential man in history! Explore the wonders of the Holy Land with its natural beauty and unique architecture, while enjoying inspirational teaching, Christian fellowship, luxury accommodations and splendid cuisine! A lifetime of memories await you!



EVANGELIST AL & SANDY GIST
FEBRUARY 23 - MARCH 6, 2026

\$6,060 FLIGHT INCLUDED OPTION

\$4,750 GROUND ONLY OPTION

ALL RATES ARE PER PERSON, DOUBLE OCCUPANCY

***SINGLE OCCUPANCY RATE: ADD \$1,700**

12-DAY ITINERARY

DEPARTING

Monday, FEBRUARY 23, 2026

HOUSTON, TEXAS

Depart: 4:30 p.m.

George Bush Intercontinental Airport

* check in is three (3) hours before flight departs

DAY 1

DEPARTURE - U.S.A.

We depart Houston for Tel Aviv.

DAY 2

FLIGHT INTO TEL AVIV - CAESAREA - NETANYA

Shalom! We arrive in HIS LAND. Upon arrival at Ben Gurion Airport, we will be met and assisted to our motor coach. We travel to Caesarea with its ancient seaport and Roman theater. After lunch we proceed to our hotel on the shores of the Mediterranean. Meal: D

DAY 3

MEGIDDO - MT. CARMEL - TIBERIAS

Today's sites include Mount Carmel, Megiddo and the Valley of Armageddon. We continue to Nazareth (Synagogue Church, Mt. Precipice, time permitting) We arrive in Tiberias at our hotel overlooking the Sea of Galilee. Meals: B, L, D

DAY 4

SEA OF GALILEE - CAPERNAUM

This morning we cross the Sea of Galilee by boat landing at Kibbutz Nof Ginosar where we will view the ancient "Jesus Boat". We continue to Tabgha and the Mt. of the Beatitudes before arriving at Kibbutz En Gev for a lunch of St. Peter's fish. Later, we will visit Capernaum. We conclude our day with baptism in the Jordan River. Overnight Tiberias. Meals: B, L, D

DAY 5

CAESAREA PHILIPPI - GOLAN HEIGHTS

This morning we travel to Gamla, the site of a Jewish city founded in the 2nd century, then we visit El Rom OZ77 movie about the battle at the Valley of Tears in the YOM KIPPUR WAR and Caesarea Philippi, the Golan Heights and view Mt. Hermon and then to Chorazim.. Overnight in Tiberias. Meals: B, L, D

DAY 6

BET SHEAN - EN HAROD - DEAD SEA

This morning we start early traveling south through the Jordan Valley to the city of Bet Shean. We then visit Gideon's Spring at En Harod and a visit at Kasr El Yehud, the baptismal site of Jesus in the Jordan River before continuing south along the shore of the Dead Sea on the lowest road in the world. We arrive at a beautiful Dead Sea hotel for the balance of the day to relax at the hotel pools, Dead Sea spa, mineral pools or to enjoy other special services. Overnight at the Dead Sea. Meals: B, L, D

DAY 7

MASADA - QUMRAN - JERUSALEM

This morning, we start early to Masada, truly a re-markable piece of history. We then view Ein Gedi before proceeding to Qumran, the site where a Bedouin shepherd found the Dead Sea Scrolls in 1947. We continue up to the Holy City of Jerusalem! Enter His gates with gladness! Over-night in Jerusalem. Meals: B, L, D

DAY 8

JERUSALEM - MOUNT OF OLIVES - GETHSEMANE - OLD CITY

Today, we drive to the top of the Mount of Olives for a view of Jerusalem before taking the Palm Sunday pathway to Dominus Flevit, the place Jesus wept over Jerusalem. We continue down the mountain to the Garden of Gethsemane and have a very special time of prayer and worship in a private garden. After lunch, we visit the Israel Museum with the Model City and the Dead Sea Scrolls. We end the day at Yad Vashem, the Holocaust Museum. Meals: B, L, D

DAY 9

OLD CITY - WAILING WALL - TEMPLE MOUNT

We start the day with a visit to the Temple Mount, where the first two Jewish temples stood. We walk through the Old City visiting the Lion's Gate, the Pool of Bethesda, the Church of St. Anne, and Antonia's Fortress where we stand on the actual pavement stones where Jesus was judged by Pilate. After lunch, we visit Friends of Zion Museum and Mahane Yehuda open-air Market. Meals: B, L, D

DAY 10

OLD CITY - SOUTHERN WALL EXCAVATIONS

This morning, we visit the Zion Gate, Temple Institute, the Jewish Quarter, Southern excavations of the Second Temple period. We end the day at the House of Caiaphas where Jesus was held His last night before His crucifixion. Meals: B, L, D

DAY 11

JERUSALEM - GARDEN TOMB

This morning, we visit the Garden Tomb for an exciting time of prayer and worship. After lunch, we visit the Valley of Elah where David slew Goliath and time permitting, the ancient city of Emmaus. Meals: B, L, D

DAY 12

TEL AVIV - HOME

We depart Tel Aviv for Houston. We will return with memories and new friends to last a lifetime and beyond!

ARRIVING

Friday, MARCH 6, 2026

HOUSTON, TEXAS

Arrive: 2:40 p.m.

George Bush Intercontinental Airport

All dates & locations subject to change, pending unforeseen circumstances.



ACCOMMODATIONS & UPGRADES



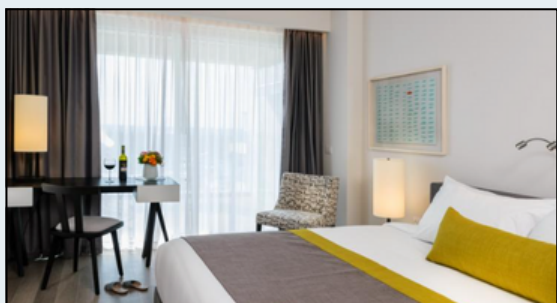
All rooms for this tour are standard base deluxe rooms.

Upgraded accommodations are optional, and are subject to availability upon request.

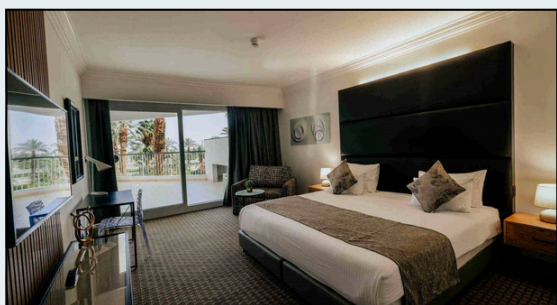
VERT LAGOON - NETANYA



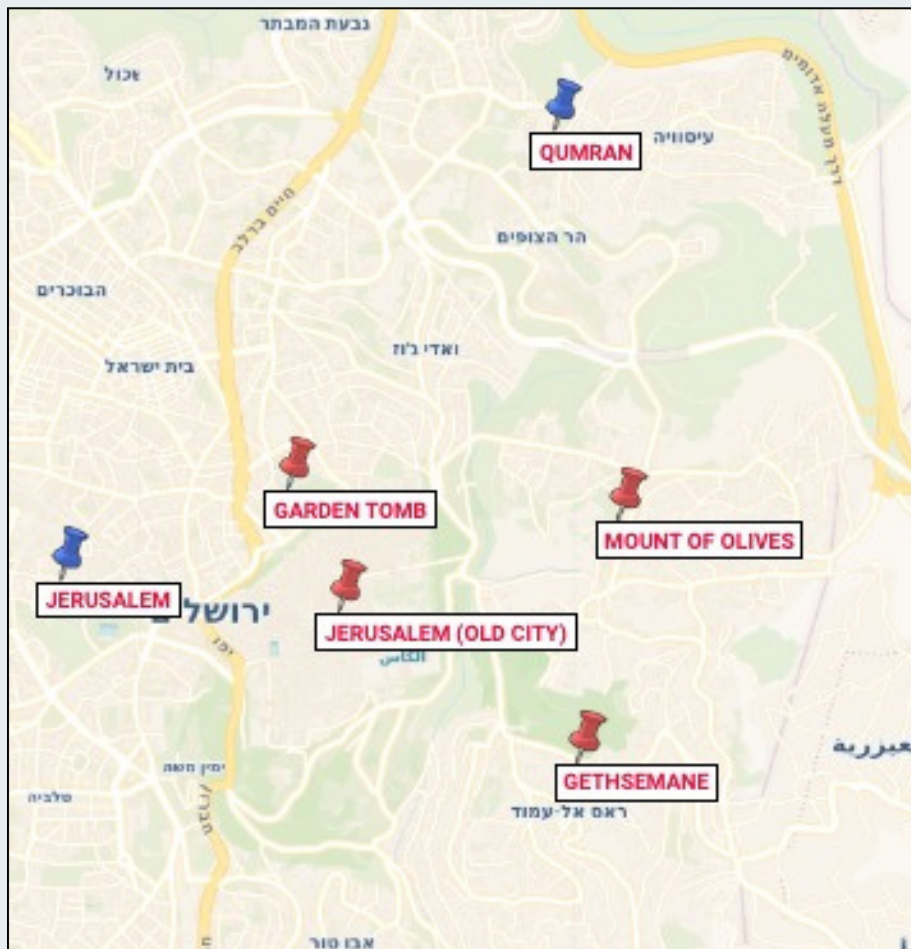
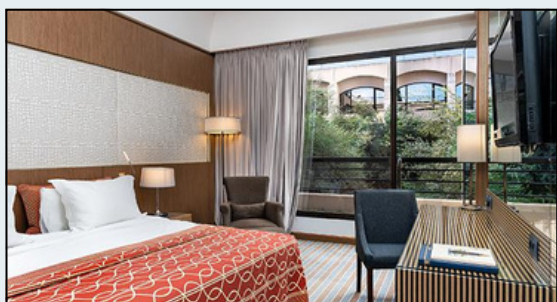
DAVID'S HARP - GALILEE



DAVID RESORT - DEAD SEA



DAN HOTEL - JERUSALEM



Come see where the price of our salvation was paid in full.



Room prices are based on dual occupancy rates. Single occupancy is optional for an added cost.
All room photos are representative, and actual rooms may vary slightly.

TERMS & CONDITIONS

PRICING: Our pricing is in U.S. dollars, and is based upon the current rate of international exchange between the U.S. dollar and foreign currencies at the time prices are posted. Whenever possible, **Discovery** obtains price guarantees from its suppliers, but in rare circumstances, a price increase may be unavoidable due to an increase in fees, including fuel surcharges, carrier surcharges, taxes, fluctuations in foreign exchange markets or any combination thereof. In that instance, the increase will be charged to the traveler up to the time of departure. Up-to-date pricing can be found at dcttravel.com.

NOT INCLUDED IN PRICING: Passport costs, optional pre/post hotel nights due to traveler's arrival and departure preferences, hotel or other costs incurred to accommodate travel connections, items of a personal nature, including, but not limited to, laundry, non-included meals, room service at hotel(s), phone calls, Internet, etc.

TRAVEL PROTECTION INSURANCE: **Discovery** recommends purchasing a travel protection plan that helps offset costs and expenses should something unexpected occur. There are various plans available which cover Trip Cancellation, Trip Interruption, Emergency Medical and Emergency Evacuation, Emergency Repatriation, Trip Delay, Baggage Delay, and more. **Discovery** does not offer travel insurance, but many plans are available for purchase elsewhere, for example, at MissionSafe.com.

PASSPORT REQUIREMENTS: Passports are required for all travelers, including children. **Passports must remain valid for 6 months beyond the completion of your travel dates; and are required for air travel outside the U.S.** For U.S. citizens and residents, more information is available online at www.travel.state.gov/passport, or by calling the National Passport Information Center at 877-487-2778. When necessary, a group visa for U.S. citizens will be obtained by **Discovery** for those confirmed by the final payment date. Non-U.S. citizens and U.S. citizens originating from outside the U.S. should consult their country's embassy regarding specific requirements for entry into each and every country of destination. **Your passport name must match the name on your registration, cruise boarding pass, and airline ticket, or you may be denied travel.** It is the personal responsibility of each passenger to fully comply with all immigration and documentation requirements.

PHYSICAL REQUIREMENTS: Travel suppliers (cruise line, air carrier, shore excursion agents, etc.) may have restrictions regarding certain physical requirement accommodations. If you have a medical condition (mobility limitations, pregnancy, etc.), or use medical equipment which could affect your travel, consult your physician and notify **Discovery**, so we can provide you with information regarding possible restrictions. If you are unable to get on and off the bus and walk without the assistance of another individual, you must bring someone with you to provide assistance, or you may stay on the bus as needed.

PAYMENT INFORMATION: Final payments **MUST** be received ninety (90) days prior to departure. Payments received inside ninety (90) days will be assessed an \$80 late payment fee. **NOTE:** All reservations not fully paid by the ninety-day deadline are subject to cancellation, and **Discovery** will not be held responsible. Cancellation of airline seats or changes to passport registrations within one hundred (100) days of departure each carry a penalty of \$100 per person. Registration deposits must be made online by credit card, and subsequent payments may be made online by credit card or by mailed payment methods, including personal checks, cashier's checks, money orders, and credit card checks drawn against your card. Subsequent payments made online by credit card incur a 2.25% processing fee, but NO processing fee is charged for the deposit at time of registration.

REGISTRATION & DEPOSIT: A deposit of \$500 per person is required at the time of registration. The deposit may be charged to your **Visa, Mastercard, American Express**, or **Discover** card. Registrations received within ninety (90) days of departure must be paid in full. A late registration may result in an additional fee for airfare, depending on the airline and seating availability.

FOR ADDITIONAL DETAILS ON TOURS AND RELEVANT POLICIES, PLEASE VISIT [OUR WEBSITE](#), AND CLICK ON THE "IMPORTANT INFORMATION" TAB OF THE TOUR SELECTED. BE SURE TO SCROLL DOWN TO THE SUBSECTION "TOUR OPERATOR RESPONSIBILITY".

FOR MORE GENERAL INFORMATION ABOUT TOURS, INCLUDING TRAVEL TIPS AND MANDATES, VISIT OUR [FREQUENTLY ASKED QUESTIONS PAGE](#).

PAYMENTS (Must be made in U.S. funds and are per person)

Registration Amount	\$500
---------------------	-------

November 25, 2025	Final payment due
-------------------	-------------------

Registration after final due date	Full payment due
-----------------------------------	------------------

RESERVATION CHANGE FEES (per person)

Day of Registration – November 24, 2025	\$100
---	-------

On or after November 25, 2025	No changes allowed
-------------------------------	--------------------

Additional fees may be assessed, such as single occupancy rates due to roommate cancellation, and will be paid by the traveler. Additionally, any deviation from group accommodations which incur additional costs will be paid by the traveler. Change fees will NOT be assessed for upgrades or for the addition of services, unless air reservations are altered and/or travel documents must be reissued.

CANCELLATION FEES (per person)

Day of Registration - November 24, 2025	\$200
---	-------

November 25 - December 10, 2025	\$500
---------------------------------	-------

December 11 - December 26, 2025	25% of tour cost
---------------------------------	------------------

December 27, 2025 - January 24, 2026	50% of tour cost
--------------------------------------	------------------

On or after January 25, 2026	NO REFUND
------------------------------	-----------

*Cancellation fees apply for any reason, including medical and family emergencies. Cancellations must be submitted to **Discovery** in writing at contact@dcttravel.com, and confirmed by reply from **Discovery**.*



DCTTRAVEL.COM

235 NE Loop 820, Suite 101

Hurst, TX 76053

817-595-2700

contact@dcttravel.com