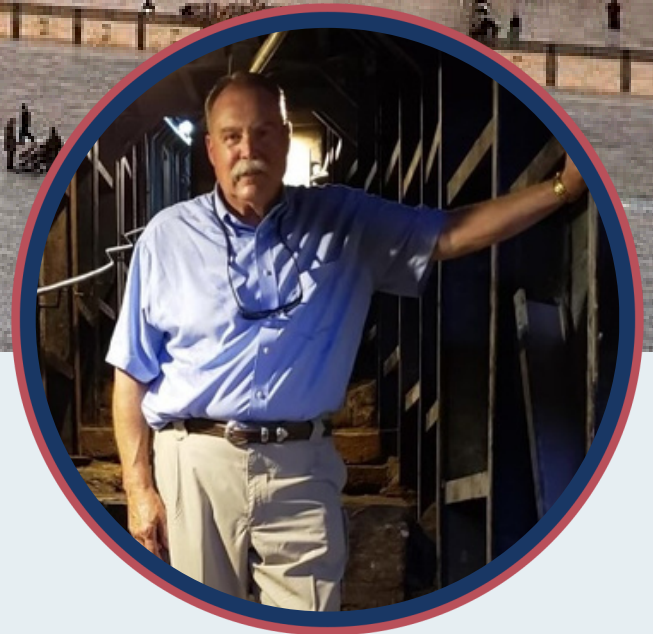


WALKING WHERE JESUS WALKED



WAILING WALL, JERUSALEM



STEVE CAMPBELL

MAY 4 – 15, 2026

PRICE \$5,571 PER PERSON

Experience the rich history and cultural significance of Israel, where the Cornerstone of our Faith taught the way to salvation and made it possible through His loving sacrifice. Embark upon a journey exploring the breathtaking sites integral to the life and death of Jesus of Nazareth, and discover the meaning behind these historical landmarks as you walk in the footsteps of the most influential man in history! Explore the wonders of the Holy Land with its natural beauty and unique architecture, while enjoying inspirational teaching, Christian fellowship, luxury accommodations and splendid cuisine! A lifetime of memories await you!

12-DAY ITINERARY

DEPARTING

Monday, May 4, 2026

DALLAS/FORT WORTH, TEXAS

Depart: 3:50 p.m.

Dallas/Fort Worth International Airport

* check in is three (3) hours before flight departs

DAY 1 - Monday, May 4:

We depart Dallas/Fort Worth to Tel Aviv.

DAY 2 - Tuesday, May 5:

Arrive in Tel Aviv 3:25 pm. Upon arrival in **Tel Aviv**, we will have to clear customs and immigration. We will meet your guide and go by van to **Tel Aviv**. We will proceed to the **City of Jaffa**. After a walking tour of **Jaffa**, we will go to the hotel in **Tel Aviv**. Then you can rest!

DAY 3 - Wednesday, May 6:

We will go to **Caesarea Maritima**, beautiful city of **Haifa, Akko, Mt. Carmel**, and **Jezreel Valley** then to **Tiberias** and **Sea of Galilee**. Hotel in Tiberias.

DAY 4 - Thursday, May 7:

Caesarea Phillippi, Mt. Hermon, Lebanon border, Golan Heights, Syrian border, Mt. Bernal, Valley of Tears. Overnight in **Tiberias**.

DAY 5 - Friday, May 8:

Galilee Area: **BRING YOUR BATHING SUIT TODAY!** This will be a day of sites that were important in the life of Jesus. We will begin the day with a cruise on the **Sea of Galilee**. We will sail from **Tiberias** to Kibbutz Ginosar, located on the northwest shore of the sea. We will see the famous "**Jesus Boat**" that is housed in a special museum at the kibbutz. Our next stop will be the **Hill of the Beatitudes**. We will then proceed to the site of **Korazin**. After lunch we will visit **Capernaum**, the town that served as the headquarters for Jesus' ministry. **Tabagna** and **Bethsaida**. We will conclude the day with a baptismal service at Yardenit, located on the **Jordan River**. Overnight in **Tiberias**.

DAY 6 - Friday, May 8:

Tiberias to Jerusalem: We will check out of our hotel in **Tiberias** and head to **Gideon Springs**. Then in **Nazareth** we will visit the **Church of the Annunciation** and the **Church of St. Joseph**. These churches are located over the traditional site where Mary and Joseph lived. We will also visit the traditional site of the **synagogue of Nazareth** where **Jesus preached His first sermon**. From **Nazareth** we will drive across the **Valley of Armageddon** to the Tell of **Megiddo**, the ancient fortress city that guarded the approach to the valley. We will tour the Tell, including its fascinating water tunnel. After eating lunch at the **Megiddo** cafeteria, we will proceed back across the **Valley of Armageddon** to the **Jordan River** Valley where we will begin to follow the course of the **Jordan River** south into **Jericho**. En route we will stop to walk through the incredible excavations at **Beit Shean**. This is the city where the body of King **Saul** was nailed to the walls. It is the largest excavation in the land of **Israel**. We will conclude the day by driving south along the **Jordan River** to **Jericho** (under Palestinian occupation), and then we will make our ascent to the city of **Jerusalem** "the **City of the Great King!**" (**Psalms 48:2**). We will spend our time in **Jerusalem**. This first night you may want to walk to the heart of new **Jerusalem** located on Ben Yehuda Street where you can mingle with Israelis who are shopping and eating ice cream at sidewalk cafes. Overnight in **Jerusalem**.

DAY 7 - Sunday, May 10:

The Mount of Olives and the **Old City:** We will drive to the top of the **Mount of Olives** for a breathtaking panoramic view of **Jerusalem**. We will then stroll down the mount, pausing en route at a lovely chapel called **Dominus Flevit**. This chapel marks the traditional site where **Jesus wept** over the city of **Jerusalem**. Across the road from **Dominus Flevit** we will visit a Jewish cemetery and learn about Jewish burial customs. We will then continue walking down the **Mount of Olives** to the Garden of **Gethsemane** and then visit the Church of All Nations. From **Gethsemane** we will proceed to **St. Stephen's Gate** where we will enter the Old City. We will visit the **Pool of Bethesda** and the Crusader Church of **St. Anne**. We will then begin our walking tour along the Via Dolorosa, following the traditional path of **Jesus** from Pilate's palace to the **Church of the Holy Sepulcher** (the traditional Catholic site of the crucifixion and burial of **Jesus**). When we finish our walk on the Via Dolorosa, we will proceed to the **Jaffa Gate** where we will board our van and drive to the south side of Jerusalem to Ramat Rachel Kibbutz where we will eat lunch. After lunch, we will return to the Old City and tour **Mount Zion** where we will visit the **Zion Gate**, the **Upper Room**, the **Tomb of David**, and Dormition Abbey Church. Overnight in **Jerusalem**.

DAY 8 - Monday, May 11:

The **Dead Sea** and **Masada:** **BRING BATHING SUIT TODAY!** We will get an early start for the **Dead Sea**. Our route will take us back down the main highway to **Jericho** where we will turn south and start driving along the shore of the **Dead Sea**. This is the lowest point on the surface of the earth. We will pass **Qumran** where the Dead Sea Scrolls were found and proceed on to **Masada**. We will ascend to the top of **Herod's** fortress of **Masada** by cable car and spend considerable time walking around this remarkable site with its fantastic view of the **Dead Sea**. En route back to **Qumran**, we will make a stop to view the site of En Gedhi (the oasis where **David** often hid). We will eat lunch at **Qumran** and then tour the archeological site. Then we will go for a swim in the **Dead Sea**, an experience you will never forget! The evening will be free for you to visit **Jerusalem**. Overnight in **Jerusalem**.

DAY 9 - Tuesday, May 12:

Mount Herzl and the **Temple Mount:** We will spend the morning at the **Temple Mount**, visiting the **Western Wall**, the **Southern Wall** excavations and tunnel, and the top of the Temple Mount. We will then proceed to the **City of David**, **Pool of Siloam** and tunnel. After lunch, we will visit the **Holocaust Museum** and tour the grounds. From there we will go to the **Jerusalem Museum** where we will see the **Dead Sea Scrolls** and visit an amazing model of **Jerusalem** in the First Century. We will conclude the day with a walk through the Mount Herzl Cemetery where we will visit the tomb of Theodor Herzl, the tombs of the Prime Ministers, and the grave of Yoni Netanyahu, one of Israel's greatest military heroes. Overnight in **Jerusalem**.

DAY 10 - Wednesday, May 13:

Free Day: You will have a free day exploring **Jerusalem**. You will be given a list of options for the day. You might want to begin the day by walking the walls of the Old City, beginning at the **Jaffa Gate** and ending at the **Damascus Gate**. Other things you can do include visiting the **King David Hotel** and the **YMCA tower**, both of which are located near our hotel. Or, you may want to go back to Ben Yehuda Street to do some shopping or to eat some ice cream at the outdoor cafes. You can, of course go shopping in the Old City in both the **Christian and Jewish Quarters**. You can explore the Cave of **Zedekiah** that runs beneath the Old City. You can visit the **Citadel Museum** at the Jaffa Gate which presents the history of Jerusalem. Your lunch is not provided on this day. You should probably plan to eat lunch somewhere in the Jewish Quarter or at the fantastic new **Mamilla Shopping Mall**, located just outside the Old City at the **Jaffa Gate**. For those interested, we might be able to arrange for you to take a taxi to **Bethlehem**. Overnight in **Jerusalem**.

DAY 11 - Thursday, May 14:

Garden Tomb and other sites in **Jerusalem**. Following a tour of the garden, we Then tour the Old City. Overnight in **Jerusalem**.

DAY 12 - Friday, May 15: (cont. on next page)

All dates & locations subject to change, pending unforeseen circumstances.



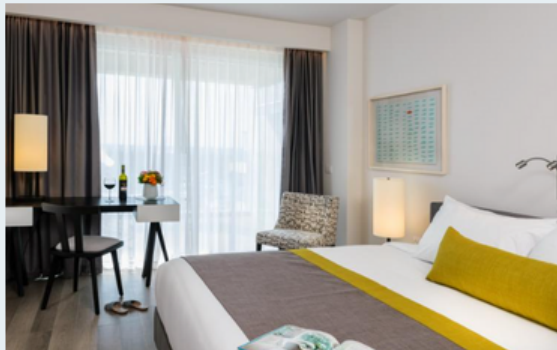
ACCOMMODATIONS & UPGRADES



All rooms for this tour are standard base deluxe rooms.

Upgraded accommodations are optional, and are subject to availability upon request.

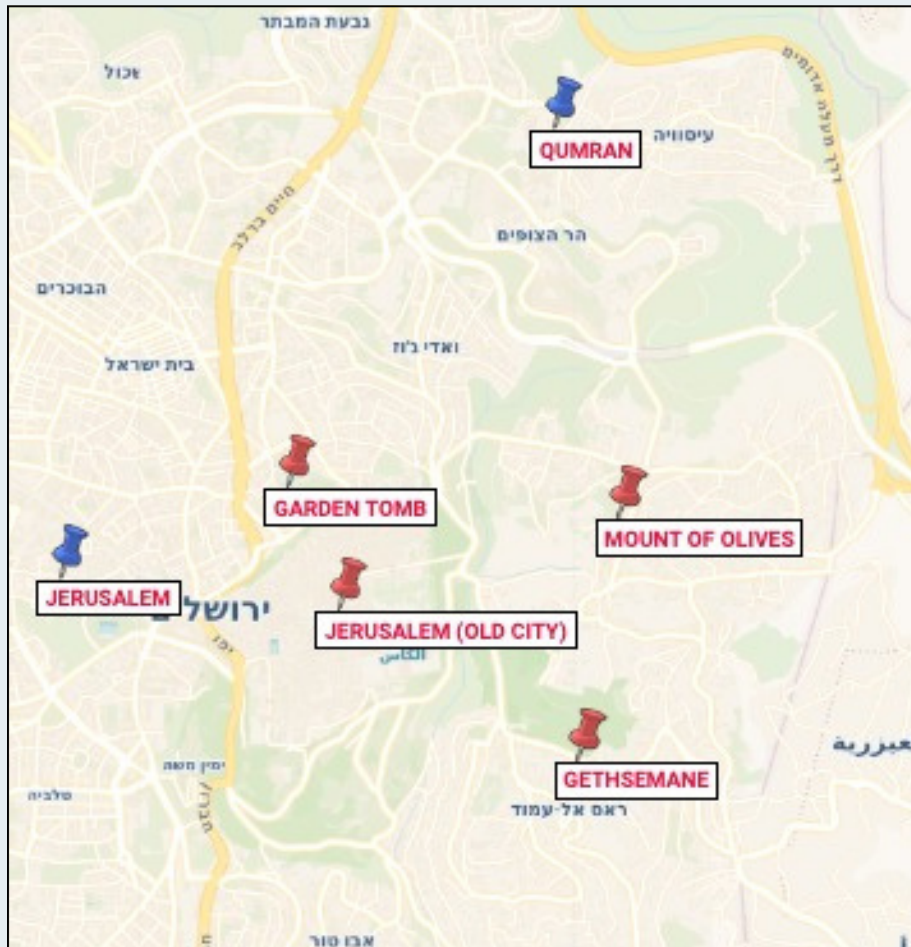
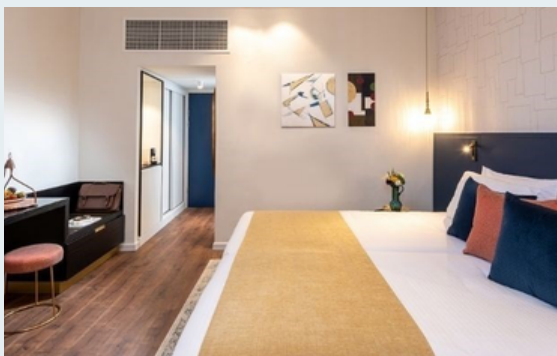
HERODS - HERZLIYA



LEONARDO PLAZA- GALILEE



PRIMA KINGS HOTEL - JERUSALEM



Come see where the price of our salvation was paid in full.



DAY 12 - Friday, May 15:

HOME to the United States! We will arrive in Frankfurt. After a plane change, we continue on to Dallas.Fort Worth where we will go through passport and customs controls. You may sleep when you get home!

ARRIVING

Friday, May 15, 2026

DALLAS/FORT WORTH, TEXAS

Arrives: 2:05 p.m.

Dallas/Fort Worth International Airport

Room prices are based on dual occupancy rates. Single occupancy is optional for an added cost.

All room photos are representative, and actual rooms may vary slightly.

TERMS & CONDITIONS

PRICING: Our pricing is in U.S. dollars, and is based upon the current rate of international exchange between the U.S. dollar and foreign currencies at the time prices are posted. Whenever possible, **Discovery** obtains price guarantees from its suppliers, but in rare circumstances, a price increase may be unavoidable due to an increase in fees, including fuel surcharges, carrier surcharges, taxes, fluctuations in foreign exchange markets or any combination thereof. In that instance, the increase will be charged to the traveler up to the time of departure. Up-to-date pricing can be found at dcttravel.com.

NOT INCLUDED IN PRICING: Passport costs, optional pre/post hotel nights due to traveler's arrival and departure preferences, hotel or other costs incurred to accommodate travel connections, items of a personal nature, including, but not limited to, laundry, non-included meals, room service at hotel(s), phone calls, Internet, etc.

TRAVEL PROTECTION INSURANCE: **Discovery** recommends purchasing a travel protection plan that helps offset costs and expenses should something unexpected occur. There are various plans available which cover Trip Cancellation, Trip Interruption, Emergency Medical and Emergency Evacuation, Emergency Repatriation, Trip Delay, Baggage Delay, and more. **Discovery** does not offer travel insurance, but many plans are available for purchase elsewhere, for example, at MissionSafe.com.

PASSPORT REQUIREMENTS: Passports are required for all travelers, including children. **Passports must remain valid for 6 months beyond the completion of your travel dates; and are required for air travel outside the U.S.** For U.S. citizens and residents, more information is available online at www.travel.state.gov/passport, or by calling the National Passport Information Center at 877-487-2778. When necessary, a group visa for U.S. citizens will be obtained by **Discovery** for those confirmed by the final payment date. Non-U.S. citizens and U.S. citizens originating from outside the U.S. should consult their country's embassy regarding specific requirements for entry into each and every country of destination. **Your passport name must match the name on your registration, cruise boarding pass, and airline ticket, or you may be denied travel.** It is the personal responsibility of each passenger to fully comply with all immigration and documentation requirements.

PHYSICAL REQUIREMENTS: Travel suppliers (cruise line, air carrier, shore excursion agents, etc.) may have restrictions regarding certain physical requirement accommodations. If you have a medical condition (mobility limitations, pregnancy, etc.), or use medical equipment which could affect your travel, consult your physician and notify **Discovery**, so we can provide you with information regarding possible restrictions. If you are unable to get on and off the bus and walk without the assistance of another individual, you must bring someone with you to provide assistance, or you may stay on the bus as needed.

PAYMENT INFORMATION: Final payments **MUST** be received ninety (90) days prior to departure. Payments received inside ninety (90) days will be assessed an \$80 late payment fee. **NOTE:** All reservations not fully paid by the ninety-day deadline are subject to cancellation, and **Discovery** will not be held responsible. Cancellation of airline seats or changes to passport registrations within one hundred (100) days of departure each carry a penalty of \$100 per person. Registration deposits must be made online by credit card, and subsequent payments may be made online by credit card or by mailed payment methods, including personal checks, cashier's checks, money orders, and credit card checks drawn against your card. Subsequent payments made online by credit card incur a 2.25% processing fee, but NO processing fee is charged for the deposit at time of registration.

REGISTRATION & DEPOSIT: **A deposit of \$500 per person is required at the time of registration.** The deposit may be charged to your **Visa, Mastercard, American Express**, or **Discover** card. Registrations received within ninety (90) days of departure must be paid in full. A late registration may result in an additional fee for airfare, depending on the airline and seating availability.

FOR ADDITIONAL DETAILS ON TOURS AND RELEVANT POLICIES, PLEASE VISIT [OUR WEBSITE](#), AND CLICK ON THE "IMPORTANT INFORMATION" TAB OF THE TOUR SELECTED. BE SURE TO SCROLL DOWN TO THE SUBSECTION "TOUR OPERATOR RESPONSIBILITY".

FOR MORE GENERAL INFORMATION ABOUT TOURS, INCLUDING TRAVEL TIPS AND MANDATES, VISIT OUR [FREQUENTLY ASKED QUESTIONS PAGE](#).

PAYMENTS (Must be made in U.S. funds and are per person)

Registration Amount	\$500
---------------------	-------

February 3, 2026	Final payment due
------------------	-------------------

Registration after final due date	Full payment due
-----------------------------------	------------------

RESERVATION CHANGE FEES (per person)

Day of Registration – February 2, 2026	\$100
--	-------

On or after February 3, 2026	No changes allowed
------------------------------	--------------------

Additional fees may be assessed, such as single occupancy rates due to roommate cancellation, and will be paid by the traveler. Additionally, any deviation from group accommodations which incur additional costs will be paid by the traveler. Change fees will NOT be assessed for upgrades or for the addition of services, unless air reservations are altered and/or travel documents must be reissued.

CANCELLATION FEES (per person)

Day of Registration - February 2, 2026	\$200
--	-------

February 3 - February 18, 2026	\$500
--------------------------------	-------

February 19 - March 6, 2026	25% of tour cost
-----------------------------	------------------

March 7 - April 4, 2026	50% of tour cost
-------------------------	------------------

On or after April 5, 2026	NO REFUND
---------------------------	-----------

*Cancellation fees apply for any reason, including medical and family emergencies. Cancellations must be submitted to **Discovery** in writing at contact@dcttravel.com, and confirmed by reply from **Discovery**.*



DCTTRAVEL.COM

235 NE Loop 820, Suite 101

Hurst, TX 76053

817-595-2700

contact@dcttravel.com