

# PAUL IN GREECE & ITALY



**ACROPOLIS, ATHENS, GREECE**

*We hope you'll join us as we explore the ancient paths of Saint Paul's journeys through Greece and Italy. Walk in the footsteps of this influential figure as you visit iconic sites such as Athens, Corinth, Thessaloniki, and Rome.*

*Experience the rich history and cultural significance of these destinations, where Paul spread the teachings of Christianity. From the modern museums to the ruins of ancient temples, this tour offers a unique opportunity to immerse yourself in the legacy of Paul's travels along the Aegean Sea, and enjoy knowledgeable guides, luxury hotel accommodations, inspired teachings, Christian fellowship, fabulous cuisine, and breathtaking sights. A lifetime of memories awaits you!*



**PASTOR RUSTY & LORRIE GEORGE**  
**DECEMBER 26, 2026 - JANUARY 4, 2027**  
**PRICE: \$7,095 PER PERSON**

# 10-DAY ITINERARY

DEPARTING

Saturday, December 26, 2026

DALLAS/FORT WORTH, TEXAS

Depart: 8:25 p.m.

Dallas/Fort Worth International Airport

\* check in is three (3) hours before flight departs

## DAYS 1 & 2

### SATURDAY & SUNDAY: FLIGHT & THESSALONIKI

We depart the U.S. today for our flight to Thessaloniki. Upon arrival in Thessaloniki, we will be met by DCT's local representative and escorted to our hotel in Thessaloniki. Thessaloniki is the second largest city in Greece and capital of the province of Macedonia. It was here in the synagogue that Paul "...reasoned with the Jews and the God-fearing Greeks..." (Acts 17:17). Remainder of the day free. Overnight Thessaloniki. (D, B)

## DAY 3

### MONDAY: PHILIPPI

Apostle Paul visited Philippi together with Silas during his Second Missionary Journey. Our first Biblical encounter with Philippi is through Act 16:11-40. At the time, Philippi had no synagogues and very few Jews, so Paul decided to wait for the Sabbath and go to the riverbanks outside the city. There, he began to talk to the women that gathered there; amongst them, Lydia—the first person to be Baptized in European soil—she and her whole household became believers. During your tour in Philippi, you will have the opportunity to visit and study your Bible in the actual place where the Baptism took place, called "Lydia's Baptistry." You will also see the place where Paul and Silas were imprisoned and freed by a violent earthquake. From there, you will continue to Kavala; the site used to be Ancient Neapolis where Paul, Timothy, and Silas landed. Dinner and overnight in Thessaloniki. (B, D)

## DAY 4

### TUESDAY: THESSALONIKI - BEREА

Apostle Paul came to Thessaloniki and went straight to the Synagogue. As described in your Bible in Acts 17:1-9, Paul preached in the Synagogue for three consecutive Sabbaths, and he gained many followers who believed. A couple of the Jews who were not persuaded created an uproar and attacked the House of Jason, one of the believers Paul was staying with during his visit. During your tour, you will have the Biblical Experience of those verses as you will see the agora in Thessaloniki, where Paul preached to the local Jews, and the House of Jason, where he lived! You will also have the opportunity to visit St. Demetrius Basilica, dedicated to a distinguished member of the Roman army and a martyred Christian convert, and see the Galerius Arch rising over the famous via Egnatia. Continue to Berea. Berea, as described in Acts 17:10-15 Paul and Silas go to Berea and preach at the Synagogue. Many of the Jews became believers, but Paul's ministry was cut short. While you are in Berea, you will see St. Paul's Bema, where he preached to the local Jews in 54 AD. Return to Thessaloniki for Dinner and overnight. (B, D)

## DAY 5

### WEDNESDAY: MORNING FLIGHT TO ATHENS - CORINTH OF APOSTLE PAUL

After breakfast you are transferred to the airport for your morning flight from Thessaloniki to Athens. Upon arrival you continue to Corinth. Corinth (Acts 18: 1-18), a city that inspired of St. Paul's most familiar letter. You will visit the Archeological Museum, the Market Place, and Temples. Walk among the ruins and stand on the Bema where Paul stood. Read Paul's letter to the Corinthians and visualize his address to the Gentiles as he began the task of building Corinth's church. Imagine where Aquila and Priscilla lived and where they had their tent making business. Acts 18:9-11 Now the Lord spoke to Paul in the night by a vision, "Do not be afraid, but speak, and do not keep silent; 10 for I am with you, and no one will attack you to hurt you; for I have many people in this city." 11 And he continued there a year and six months, teaching the word of God among them. Return to Athens for Dinner and overnight. (B, D)

## DAY 6

### THURSDAY: ATHENS OF PAUL

In 51 AD, Apostle Paul traveled from Berea to Athens by boat. His boat anchored at Faliron that used to be the main port serving Athens. Apostle Paul traveled from port to Athens. While waiting for Silas & Timothy to come from Macedonia, he spent most of his time talking with citizens at the Synagogues and the Agora. The Athenians took an interest in his teachings and invited him to present it more analytical at the Aeropagus, the hill west of Acropolis. Paul stood in the midst of the Aeropagus and gave his famous Aeropagus Sermon, emphasizing the need to know God rather than worship the unknown as described in Acts 17:16-34. Follow your guide on a journey to the ancient Acropolis where you will see the Propylaea, the Parthenon and the Erectheum. View Mars Hill where Paul preached the gospel to the intellectual Athenian community of his day (Acts 17: 15-34). View the ruins of the Agora, ancient market place and center of Athenian public life, where Paul preached to the skeptical Athenians. You will view the Olympic Stadium, where the modern Olympics began and where the games returned in 2004. Dinner and overnight in Athens. (B, D)

## DAY 7

### FRIDAY: FLY TO ROME & ORIENTATION

Today you continue your Biblical Journey in Rome. Upon Arrival in Rome, you will head for the heart of the Eternal City. Enjoy an orientation walk with you tour director, and lunch in one of the famous squares. Continue to your hotel for Dinner and overnight in Rome. (B,D)

## DAY 8

### SATURDAY: VATICAN MUSEUMS & CATACOMBS

This morning you visit The Vatican Museums, Sistine Chapel, and St Peter's Basilica. Almost all Christians martyred in the Circus of Gaius/Nero—the site where St. Peter's Square now stands. The Egyptian obelisk in the center of the square is original to the circus, though it stood in a different spot. Here Peter was crucified, according to tradition, upside down ( John 21:18-19). He is most likely buried deep beneath the Basilica in the original burial cave. In the afternoon you continue to the Catacombs. Most famous for the early Christians buried here, the catacombs offer an essential contribution to early Christian art. Early frescoes and sculptures still exist in the catacombs. Most touching are the smaller burial spots carved out for children who had died. Dinner and overnight at your hotel in Rome. (B,D)

## DAY 9

### SUNDAY: ROME OF APOSTLE PAUL

This morning you start your day at the most inspiring place, Tre Fontane (Abbey of Three Fountains). Tradition tells us Paul was martyred outside the walls of Rome at a place most people have never heard of—one of the Christian sites not on the tourist maps. You gather at the gardens here for your Teaching. Next, you see the Church of St Paul outside the walls; many believe Paul is buried here. Paul went to Rome as a prisoner in chains; Acts 2-28 tells us the story, You visit Mamertine prison today, where Paul was held. You continue with a walking tour through Roman Forum and towards the Arch of Titus. We continue to Pantheon, Piazza Navona & Trevi Fountain. Dinner and overnight at your hotel in Rome. (B,D)

## DAY 10

### MONDAY: RETURN FLIGHT TO THE U.S.A.

We depart for the airport, where we fly back to the U.S. We will return with new friends and memories to last a lifetime!

ARRIVING

Monday, January 4, 2027

DALLAS/FORT WORTH, TEXAS

Arrives: 6:35 p.m.

Dallas/Fort Worth International Airport

# ACCOMMODATIONS & UPGRADES

*All rooms for this tour are standard base rooms.*

*Upgraded accommodations are optional, and are subject to availability upon request.*

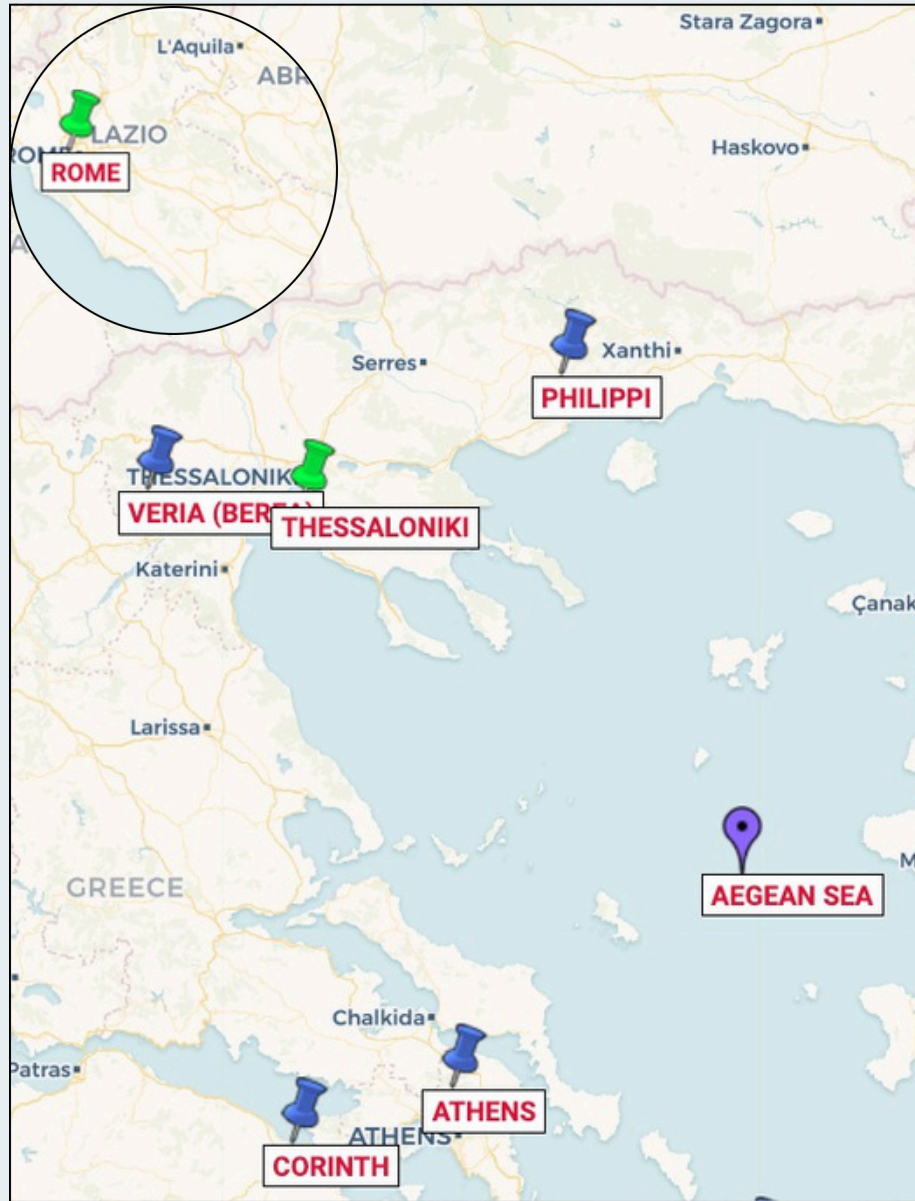
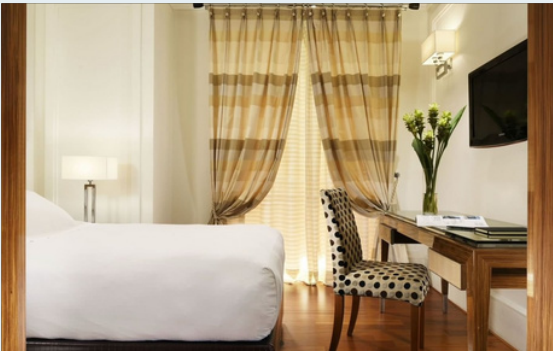
## The MET Hotel



## Athens Marriott



## Una Deco



Room prices are based on dual occupancy rates. Single occupancy is optional for an added cost.  
All room photos are representative, and actual rooms may vary slightly.

# TERMS & CONDITIONS

**PRICING:** Our pricing is in U.S. dollars, and is based upon the current rate of international exchange between the U.S. dollar and foreign currencies at the time prices are posted. Whenever possible, **Discovery** obtains price guarantees from its suppliers, but in rare circumstances, a price increase may be unavoidable due to an increase in fees, including fuel surcharges, carrier surcharges, taxes, fluctuations in foreign exchange markets or any combination thereof. In that instance, the increase will be charged to the traveler up to the time of departure. Up-to-date pricing can be found at [dcttravel.com](http://dcttravel.com).

**NOT INCLUDED IN PRICING:** Passport costs, lunches, optional pre/post hotel nights due to traveler's arrival and departure preferences, hotel or other costs incurred to accommodate travel connections, items of a personal nature, including, but not limited to, laundry, non-included meals, room service at hotel(s), phone calls, Internet, etc.

**TRAVEL PROTECTION INSURANCE:** **Discovery** recommends purchasing a travel protection plan that helps offset costs and expenses should something unexpected occur. There are various plans available which cover Trip Cancellation, Trip Interruption, Emergency Medical and Emergency Evacuation, Emergency Repatriation, Trip Delay, Baggage Delay, and more. **Discovery** does not offer travel insurance, but many plans are available for purchase elsewhere, including, for example, at [MissionSafe](http://MissionSafe).

**PASSPORT REQUIREMENTS:** Passports are required for all travelers, including children. **Passports must remain valid for 6 months beyond the completion of your travel dates; and are required for air travel outside the U.S.** For U.S. citizens and residents, more information is available online at [www.travel.state.gov/passport](http://www.travel.state.gov/passport), or by calling the National Passport Information Center at 877-487-2778. When necessary, a group visa for U.S. citizens will be obtained by **Discovery** for those confirmed by the final payment date. Non-U.S. citizens and U.S. citizens originating from outside the U.S. should consult their country's embassy regarding specific requirements for entry into each and every country of destination. **Your passport name must match the name on your registration, cruise boarding pass, and airline ticket, or you may be denied travel.** It is the personal responsibility of each passenger to fully comply with all immigration and documentation requirements.

**PHYSICAL REQUIREMENTS:** Travel suppliers (cruise line, air carrier, shore excursion agents, etc.) may have restrictions regarding certain physical requirement accommodations. If you have a medical condition (mobility limitations, pregnancy, etc.), or use medical equipment which could affect your travel, consult your physician and notify **Discovery**, so we can provide you with information regarding possible restrictions. If you are unable to get on and off the bus and walk without the assistance of another individual, you must bring someone with you to provide assistance, or you may stay on the bus as needed.

**PAYMENT INFORMATION:** Final payments **MUST** be received ninety (90) days prior to departure. Payments received inside ninety (90) days will be assessed an \$80 late payment fee. **NOTE: All reservations not fully paid by the ninety-day deadline are subject to cancellation, and Discovery will not be held responsible.** Cancellation of airline seats or changes to passport registrations within one hundred (100) days of departure each carry a penalty of \$100 per person. Registration deposits must be made online by credit card, and subsequent payments may be made online by credit card or by mailed payment methods, including personal checks, cashier's checks, money orders, and credit card checks drawn against your card. Subsequent payments made online by credit card incur a 2.25% processing fee, but NO processing fee is charged for the deposit at time of registration.

**REGISTRATION & DEPOSIT:** **A deposit of \$500 per person is required at the time of registration.** The deposit may be charged to your **Visa, Mastercard, American Express,** or **Discover** card. Registrations received within ninety (90) days of departure must be paid in full. A late registration may result in an additional fee for airfare, depending on the airline and seating availability.

**FOR ADDITIONAL DETAILS ON TOURS AND RELEVANT POLICIES, PLEASE VISIT [OUR WEBSITE](#), AND CLICK ON THE "IMPORTANT INFORMATION" TAB OF THE TOUR SELECTED. BE SURE TO SCROLL DOWN TO THE SUBSECTION "TOUR OPERATOR RESPONSIBILITY".**

**FOR MORE GENERAL INFORMATION ABOUT TOURS, INCLUDING TRAVEL TIPS AND MANDATES, VISIT OUR [FREQUENTLY ASKED QUESTIONS PAGE](#).**

## PAYMENTS (Must be made in U.S. funds and are per person)

Registration Amount \$500

September 27, 2026 Final payment due

Registration after final due date Full payment due

## RESERVATION CHANGE FEES (per person)

Day of Registration – September 26, 2026 \$100

On or after September 27, 2026 No changes allowed

*Additional fees may be assessed, such as single occupancy rates due to roommate cancellation, and will be paid by the traveler. Additionally, any deviation from group accommodations which incur additional costs will be paid by the traveler. Change fees will NOT be assessed for upgrades or for the addition of services, unless air reservations are altered and/or travel documents must be reissued.*

## CANCELLATION FEES (per person)

Day of Registration - September 26, 2026 \$200

September 27 - October 12, 2026 \$500

October 13 - October 28, 2026 25% of tour cost

October 29 - November 26, 2026 50% of tour cost

On or after November 27, 2026 NO REFUND

*Cancellation fees apply for any reason, including medical and family emergencies. Cancellations must be submitted to **Discovery** in writing at [contact@dcttravel.com](mailto:contact@dcttravel.com), and confirmed by reply from **Discovery**.*



[DCTTRAVEL.COM](http://DCTTRAVEL.COM)

235 NE Loop 820, Suite 101

Hurst, TX 76053

817-595-2700

[contact@dcttravel.com](mailto:contact@dcttravel.com)